

Transfer switches

GTEC supplement



> Specification sheet

Supplement to SG-1478

Our energy working for you.™



**Power
Generation**

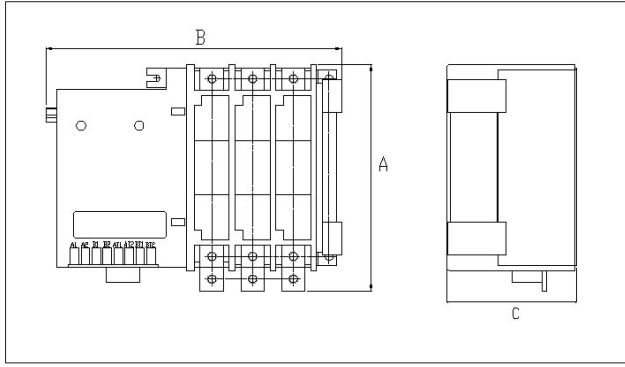
Description

The open construction GTEC combines reliability and flexibility to varied applications for load transfer. The open construction is provided with the same rugged switch mechanism, din rails, relays, and control as the standard GTEC. The PowerCommand® micro-processor control monitors utility and emergency standby generator set power. When utility power fails or is unsatisfactory, the control starts the generator set and transfers the load from the utility to the generator set. Once utility power returns, the switch automatically transfers the load back to the utility. The fully integrated controller is designed for practical functionality, inclusive of LED indicators and digital pushbuttons for ease of operator use.

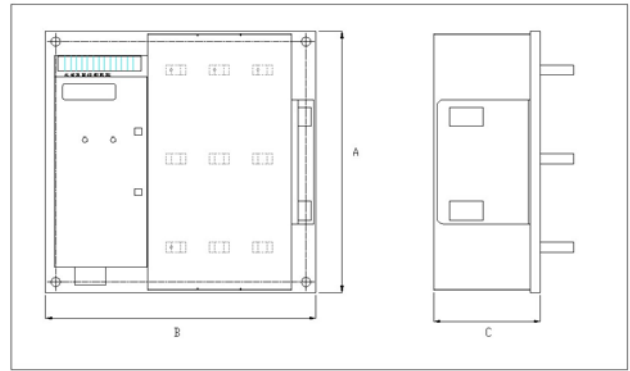
Electrical performance

Rated voltage	110 - 480 VAC					
Rated current - Amps	40, 63	100, 125	160, 200, 225, 250	350, 400, 500	630, 800	1000, 1250
Connection	Front	Front	Front	Front	Rear	Rear
Number of poles	2, 3, 4	2, 3, 4	2, 3, 4	2, 3, 4	2, 3, 4	2, 3, 4
Overload current (making-breaking test)	95 A	188 A	375 A	750 A	1200 A	1875 A
Endurance cycles @ current (operational performance capability)	5000 @ 0 A, 1000 @ 63 A	5000 @ 0 A, 1000 @ 125 A	5000 @ 0 A, 1000 @ 250 A	2500 @ 0 A, 500 @ 500 A	2500 @ 0 A, 500 @ 800 A	2500 @ 0 A, 500 @ 1250 A
Operating frequency	1 per minute					1 per 3 minutes
Withstand current with fuse (conditional short circuit test)	26 kA @ 480 VAC RT16NT-00 63A	26 kA @ 480 VAC RT16NT-00 125A	38 kA @ 480 VAC RT16NT-2 250A	50 kA @ 480 VAC RT16NT-3 500A	55 kA @ 480 VAC RT16NT-4 800A	65 kA @ 480 VAC RT16NT-4 1250A
Transfer time	<100 mS					
Auxiliary switches	1 Form C contact (N.O., N.C., Com) for normal power and 1 for emergency power.					
Accessories	Elevator signal relay, programmable 7 day clock, manual restore, auxiliary relays, battery chargers.					

Dimensions for 40 A – 500 A, 2 and 3 pole transfer switch



Dimensions for 630 A – 1250 A, 2 and 3 pole transfer switch



2-pole

	A	B	C		
Amp rating	Height - mm	Width - mm	Depth - mm	Weight - kg	Outline drawing
40, 63	193	192	112	4	306-5010
100, 125	193	209	112	4.5	306-5011
160, 200, 225, 250	194	219	112	6	306-5012
350, 400, 500	290	280	132	11	306-5013
630, 800*	390	340	210	25	306-5014
1000, 1250*	390	370	250	31	306-5015

3-pole

	A	B	C		
Amp rating	Height - mm	Width - mm	Depth - mm	Weight - kg	Outline drawing
40, 63	193	214	112	5	306-4992
100, 125	193	239	112	6.5	306-4990
160, 200, 225, 250	194	254	112	8	306-4968
350, 400, 500	290	340	132	14	306-4970
630, 800*	390	405	210	33	306-4983
1000, 1250*	390	450	250	40	306-4985

4-pole

	A	B	C		
Amp rating	Height - mm	Width - mm	Depth - mm	Weight - kg	Outline Drawing
40, 63	193	235	112	6.5	306-4993
100, 125	193	269	112	8	306-4991
160, 200, 225, 250	194	269	112	10	306-4969
350, 400, 500	290	400	132	18	306-4971
630, 800*	390	470	210	42	306-4984
1000, 1250*	390	530	250	51	306-4986

* 630 - 1250 Ampere Switches are rear connect, all others are Front Connect

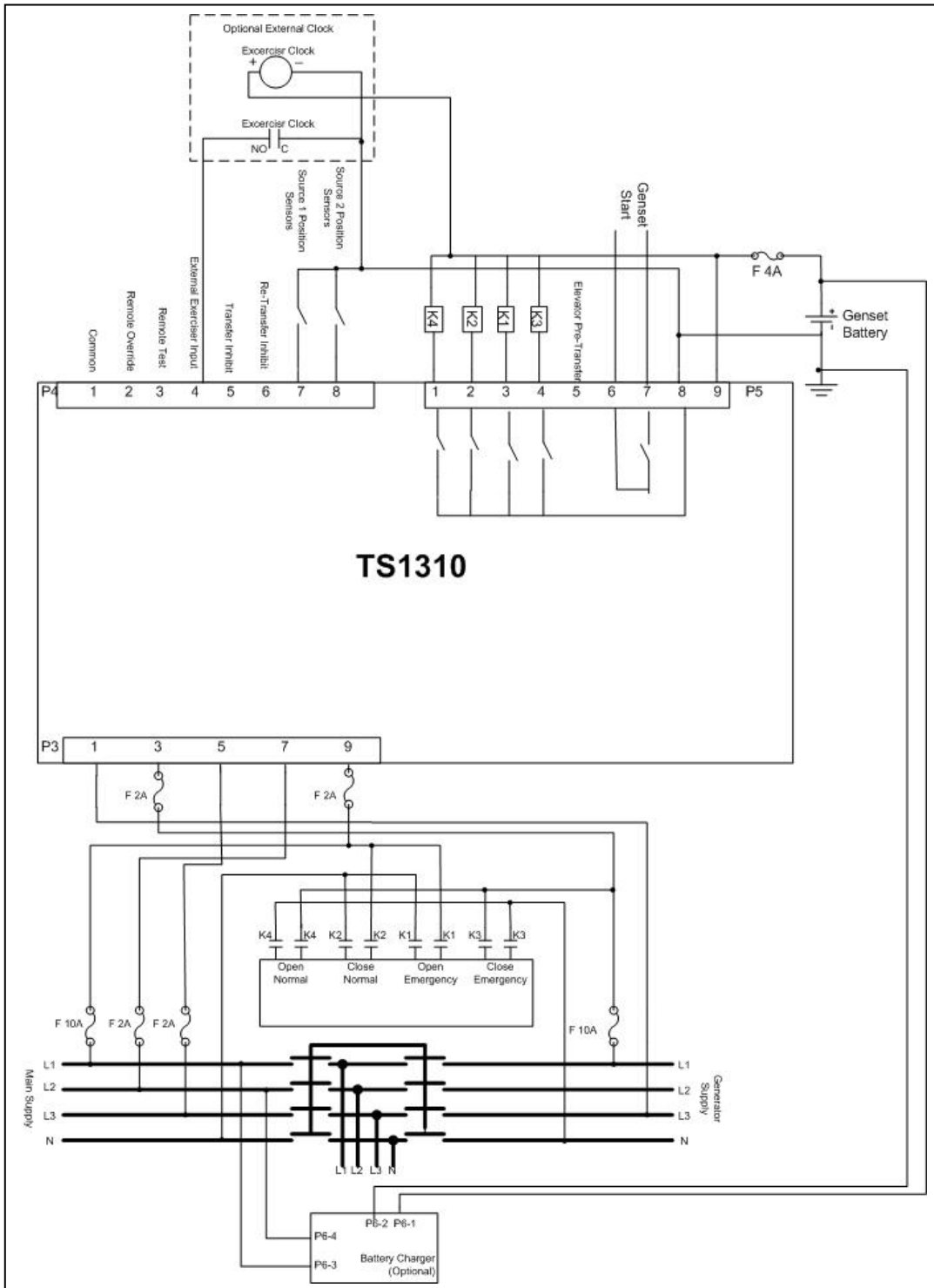
Our energy working for you.™

www.cumminspower.com

©2007 | Cummins Power Generation | Specifications Subject to Change Without Notice
 Cummins and PowerCommand are registered trademarks of Cummins Inc. AmpSentry is a trademark of Cummins Inc.
 SG-1477b (3/07)



Typical wiring diagram using the TS1310 control (line to line voltage sensing)



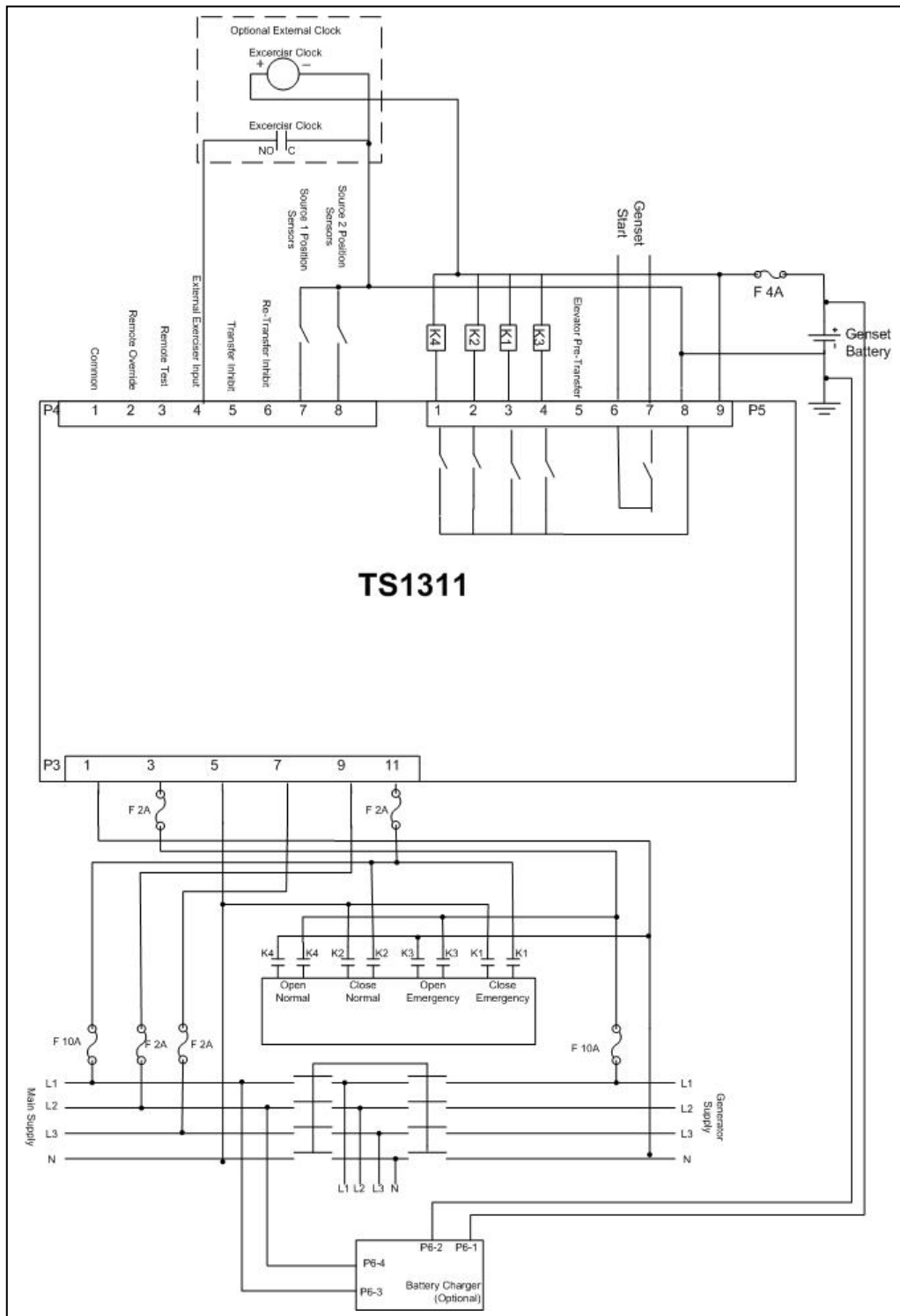
Our energy working for you.™

www.cumminspower.com

©2007 | Cummins Power Generation | Specifications Subject to Change Without Notice
 Cummins and PowerCommand are registered trademarks of Cummins Inc. AmpSentry is a trademark of Cummins Inc.
 SG-1477b (3/07)



Typical wiring diagram using the TS1311 control (line to neutral voltage sensing)



Americas
 1400 73rd Avenue N.E.
 Minneapolis, MN 55432 USA
 Phone: 1 763 574-5000
 Fax: 1 763 574-5298

Europe, CIS, Middle East and Africa
 Manston Park Columbus Ave.
 Manston Ramsgate
 Kent CT 12 5BF United Kingdom
 Phone 44 1843 255000
 Fax 44 1843 255902

Asia Pacific
 10 Toh Guan Road #07-01
 TT International Tradepark
 Singapore 608838
 Phone 65 6417 2388
 Fax 65 6417 2399

Our energy working for you.™

www.cumminspower.com

©2007 | Cummins Power Generation | Specifications Subject to Change Without Notice
 Cummins and PowerCommand are registered trademarks of Cummins Inc. AmpSentry is a trademark of Cummins Inc.
 SG-1477b (3/07)

